

# clever



## 12 Winston Avenue

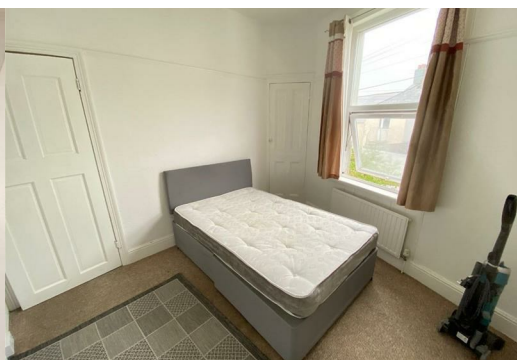
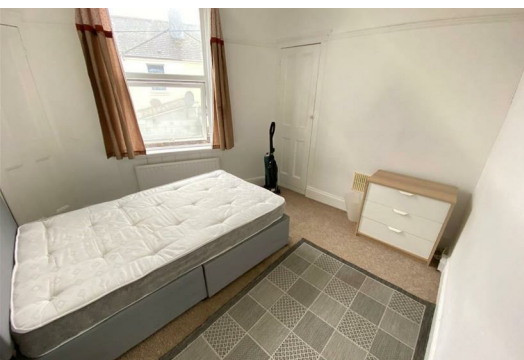
, Plymouth, PL4 6AZ

**£450 Per month**



\*\*\*AVAILABLE NOW - A CENTRALLY LOCATED LIGHT AND AIRY DOUBLE BEDROOM IN A SHARED PROPERTY - £450.00 INCLUSIVE OF BILLS\*\*\*

Situated in the heart of the city, this room is perfect for a single individual seeking comfortable accommodation. Natural light floods the room through a window, creating a bright and airy atmosphere during the day. Tenants will have access to shared facilities, including a communal kitchen/living area and bathroom. These spaces are well-maintained and equipped with the essentials for everyday living. Conveniently located near the town centre and the train station, this double room provides easy access to shops, restaurants, public transportation, and more. Deposit £495. Council Tax Band B. EPC Rating D.



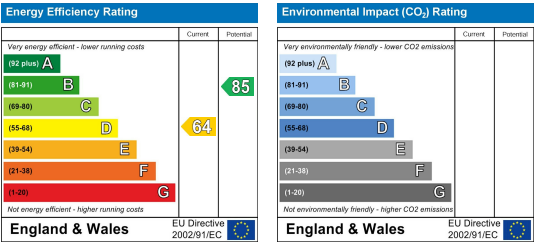
Area Map



Floor Plans



Energy Efficiency Graph



These particulars, whilst believed to be accurate are set out as a general outline only for guidance and do not constitute any part of an offer or contract. Intending purchasers should not rely on them as statements of representation of fact, but must satisfy themselves by inspection or otherwise as to their accuracy. No person in this firms employment has the authority to make or give any representation or warranty in respect of the property.